

GIS 2023 - PRESS KIT

OVERVIEW OF NEW MODELS AND TELEHANDLER RANGE CONCEPT

The machines in the new telehandler ranges have undergone major structural changes, both electrical, thanks to the introduction of the 3-line CANBUS system, and hydraulic, thanks to the optimisation of flows and the addition of oversized pumps. The 6-tonne RTH range has been completely redesigned, with the cab in a more forward position to improve accessibility and visibility during lifting operations.

Unlike the previous generation, the new RTH 5.18 will be the entry level machine in the range, replacing the RTH 4.18. This machine is intended to be the entry-level model in the Magni telehandler family, for those who may be new to the world of telehandlers and are looking for a compromise between ease of use, performance and price.

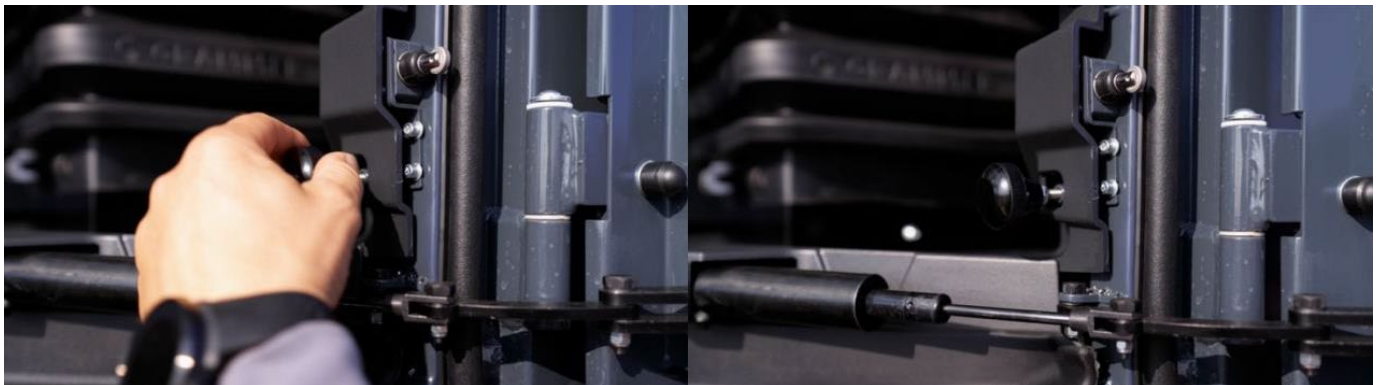
The RTH 6.21, 6.23, 6.25 and 6.30 are now permanently no longer in the price list and have been replaced by the new RTH 6.22, 6.26 and 6.31. These models not only have 1 metre more lifting height than the previous generation, but also offer up to 70% improved load charts. A real leap into the future for the roto sector, positioning them at the top of their category.

The latest addition to the RTH range, the 8.27 is the result of the compactness of the RTH 7.26 and the performance of the previous generation RTH 8.25.

The year 2024 will see major novelties for both the fixed telehandler range, with a significant expansion of the TH family, and the RTH range, which will soon include two new models ready to set new records.

THE NEW CAB AND REVOLUTIONARY SOFTWARE

On entering the cab, it is immediately noticeable how the new door geometry allows the door to **fully open at 180 degrees** (previously it stopped at 90 degrees) and can also be easily unlocked from the ground using a lever located at the cab entrance.



Magni's patented "**easy access**" system automatically stops the turret rotation when approaching the access ladder, simply by pressing a green button on the left joystick.



The cab **interior** has been **completely redesigned** and all upholstery is injection moulded to ensure durability and a better finish.

When the door is opened, courtesy lights are switched on under the access ladder, under the armrests, on the cab ceiling and under the right-hand dashboard. These LEDs are dimmable as they gradually reduce in intensity when the machine is switched off.

The cab has been further developed to improve **visibility** by increasing the glass surface at the top, and a sun blind comes as standard for operator comfort.



Airflow inside the cab has been improved with a new design in the lower part of the windscreen to optimise defrosting in cold weather.



The steering column has also been slimmed down to improve visibility, while maintaining all adjustment and safety standards.



In the new cab, the two **armrests** on the seat (which can also be adjusted independently) can now be raised to create a practical storage compartment under the right armrest. In the upper part of the cab, two technical compartments have been fitted to house most of the electrical control units, fuses and diagnostic sockets to facilitate routine and extraordinary maintenance.

At the rear of the cab, behind the seat, a dedicated remote control support has been fitted to protect it from dirt, wear and shocks.



The new RTH range also comes as standard with a **rear view camera** to monitor the rear manoeuvring area on the touch-screen, which runs the MCTS (Magni Combi Touch System) software. This equipment is available as an option on the TH and HTH ranges.

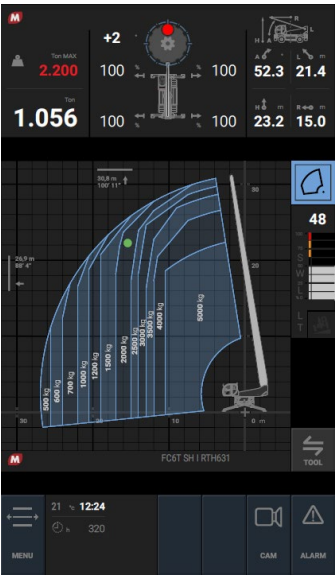
12-inch and 7-inch displays are available, depending on the range and model.

The software has been standardised across the range to improve diagnostics and speed up checks and updates. With this in mind, the new TH and RTH's **on-board system** has been completely redesigned. The interface has been graphically redesigned to make it easier and more intuitive to use, with functions identified by icons.

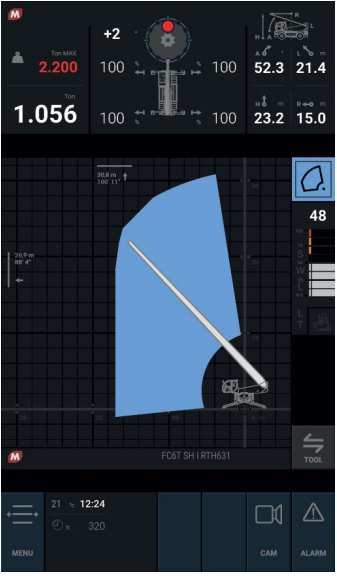
Unlike the previous version, there is now a main menu page from which you can access the various thematic pages, which have been enriched with new functions and allow the operator to work more easily.

Another important evolution concerns the **load chart page**, which now offers three different types of visualization: classic, which was also available in previous versions; dynamic, which allows the load chart to be displayed according to the load being lifted; and finally from above, which is only available on rotos and allows greater precision when working on tyres or on an uneven stabilisation surface.

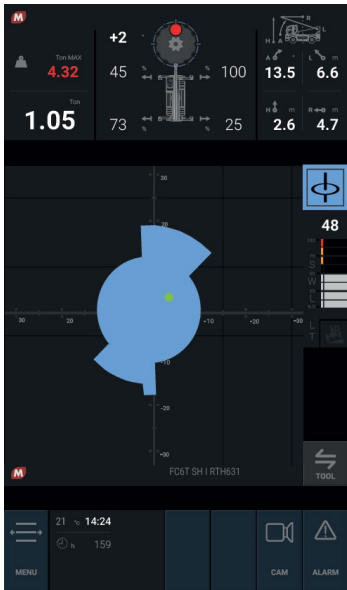
Classic



Dinamic



From above



THE TH RANGE EXTENSION: 4.5.15 / 4.5.15 P - 4.5.19 / 4.5.19 P



The TH range of telehandlers for construction and light industry is designed for maximum performance in any situation.

Standard four-wheel drive ensures maximum grip on all types of terrain, while the **hydrostatic transmission** ensures optimum off-road performance. The new THs have a new chassis to maximise visibility and facilitate the access to the cab.

Both models are available with **2 different engines**:

- Deutz TCD 3.6 Stage V (with DPF) - 55 kW TH 4.5.15 & TH 4.5.19
- Deutz TCD 3.6 Stage V (with DPF + AdBlue) - 74.4 kW TH 4.5.15 P & TH 4.5.19 P

The compact dimensions of Magni's fixed telehandlers make them ideal for working in confined spaces and ensure **maximum manoeuvrability** in any location. When retracted, pivoting stabilizers remain entirely within the machine's footprint and do not affect ground clearance. When extended they create a very compact stabilisation area, providing stability and lifting capacity at the top of their class.



Both models are equipped with a $\pm 8^\circ$ levelling system on tyres that allows the operator to adjust the machine's inclination and to have the full load chart in all operations, even on irregular terrain that would normally compromise lifting performance.

Magni has also introduced an additional levelling safety feature: if the operator attempts to manually correct the machine's inclination on uneven ground, the system detects this and compensates only in the proper direction, preventing any movement that could compromise safety.



THE NEW ZERO EMISSION OIL FREE SCISSOR LIFTS

Magni's new range of Oil Free electric scissor lifts includes 7 new models (ES0507OF, ES0607OF, ES0708OF, ES0807OF, ES0808OF, ES1008OF, ES1012OF) and offers maximum working heights from 5 to 10 metres and maximum load capacities from 230 kg to 450 kg. Instead of traditional oil hydraulic cylinders, these models use electric actuators for lifting, lowering and steering, reducing noise emissions. These platforms are suitable for environments where contamination from oil or fuel spillage must be avoided, such as the food and chemical industries.

All models in the range are powered by AGM (Absorbent Glass Mat) batteries from 55 to 185 Ah, offering reliability, low consumption, long life and zero emissions. In addition, proportional controls increase efficiency by eliminating vibration and ensuring smooth movements.

These models minimise maintenance and reduce the cost of ownership. On the one hand, their Oil Free nature eliminates oil leaks and prevents efficiency losses due to high or low operating temperatures. On the other hand, the AGM batteries are maintenance free, perform well at low temperatures and remain charged for a long time.

These platforms are extremely safe, with integrated 'anti-pothole' to prevent wobbling at height and have a greater resistance to water and dust. In addition, the high vibration resistance and watertightness of the batteries prevent leakage even if the housing is damaged.



These new scissor lifts join the two recently launched models of Oil Free vertical mast lifts: the MJP07OF and MJP08OF, which offer working heights of 6.70 and 7.60 metres respectively, and maximum capacities of 200 and 227 kg. Enjoying the same benefits of Oil Free technology, they ensure zero emissions and excellent versatility, even in confined spaces.



Download all the pics here:

<https://www.magnith.com/wp-content/uploads/2023/10/Press-GIS-Photos.zip>